

CELL PHONE SERVICE

AT&T: Receive up to 18% off on cell service.



VERIZON: Save up to 18% on cell service.



CHILDCARE

MONTESSORI HOUSE OF OCALA: When enrolling your child(ren), show your employee ID or pay stub to have the initial registration fee waived.



EDUCATION / TRAINING

MASTER THE POSSIBILITIES: Call (352) 861-9751 to receive discounts on class registrations or for more information.



ENTERTAINMENT

CIRCLE SQUARE CULTURAL CENTER: When purchasing tickets, show your employee ID or pay stub to receive the resident ticket rate.



TICKETS AT WORK: Register at TicketsatWork.com to receive discounts for theme parks, attractions, shows, hotels, and more.



FITNESS / WELLNESS

"BETTER YOU" PROGRAM: Health and wellness benefits (smoking cessation, health fairs, biometric screening, etc.) at no cost to employees with Florida Blue insurance.



B-HEALTHY: Show your employee ID or pay stub to receive 10% off supplements. Located in Friendship Center.



EMPLOYEE CONNECTPLUS ASSISTANCE PROGRAM: Free 24/7 support, resources and information to handle personal & work-life issues.



GOLF: Show your employee ID or pay stub to receive discounts for a round of golf or select merchandise at Candler Hills Golf Shop or On Top of the World Golf Shop.



FITNESS / WELLNESS (CONT'D)

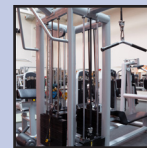
HEALTH ADVOCATE: Free resource to help with healthcare issues, decisions and claims.



POWER PARK: All park rules must be followed and employees must move aside for residents. Located at 8995 SW 90th Street, Ocala, FL 34481.



RECREATION CENTER FITNESS CENTER: Show your employee ID or pay stub at the fitness desk after 4 pm, Monday-Friday for access. Prior approval must be received by Human Resources. Limited number of passes available. Arbor Fitness Center is not available for employee use.



THE RANCH FITNESS CENTER & SPA: Employee and spouse fitness membership is \$20 per month per person plus \$35 one time initiation fee. Ranch member or not, employees receive 25% off salon & spa services and 15% off products.

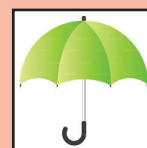


OTHER

ADDITIONAL BENEFITS: After 60 days of full-time employment, eligible employees receive up to \$15,000 term life insurance at no cost. Eligible full-time employees receive 5 personal paid days plus one floating holiday after 3 months of employment. Eligible full-time employees receive:

- After 1 year, 10 paid vacation days.
- After 5 years, 15 paid vacation days.
- After 10 years, 20 paid vacation days.

Employees who are at least 21 years old and have completed 6 months of service, will have the opportunity to save for retirement by participating in the 401k Plan. The company will match 25% of the first 8% deferred. For more information, email amy_lugo@colenbuilt.net.



EMPLOYEE REFERRAL PROGRAM: Refer a qualified job applicant and receive a \$100 bonus for each referred applicant once the applicant is hired and completes 90 days of service. There is a \$1,000 bonus for the employee who refers the most hired employees in 2022. In case of a tie, the bonus will be split. For more information, email eve_mendez@colenbuilt.net.



WELLS FARGO ADVISORS: Free financial planning advice.



OTHER (CONT'D)

WORLD HOME IMPROVEMENTS: Employees receive 10% off any home remodeling project.



RESTAURANTS

MR. B's BIG SCOOP: Show your employee ID or pay stub to receive 10% off your purchase. Located in Circle Square Commons.



SID'S COFFEE SHOP & DELI, THE CLUB AT CANDLER HILLS & THE PUB: Show your employee ID or pay stub to receive 15% off employee's meal (does not include alcohol).



SHOPPING

DELL: Discounted shopping available online.



WHIRLPOOL: Discounted shopping available online.



DELTA/BRIZO FAUCETS: Suncoast Sales administers the employee purchase program. The employee's cost would be .3500 multiplier or .6500 off the published list price plus 7% state sales tax.



Some perks are only available to full-time employees.

Many others, such as product discounts, are available to employees who work a minimum of 20 hours.

Please check with your supervisor prior to participating in fitness perks during work hours.